



Mill Conformance with Due Diligence Requirements: **The Good, the Bad, and the Ugly**

Side Session Affiliated with the
OECD Forum on Due Diligence in the Garment and Footwear Sector
February 20, 2023

Agenda

- 1. Introductions**
- 2. The Good**
- 3. The Bad**
- 4. The Ugly**
- 5. The Way Forward**

Host & Speakers



Patricia Jurewicz
(Host)

Founder & CEO
Responsible Sourcing
Network (RSN) and
Yarn Ethically &
Sustainably Sourced
(YESS)



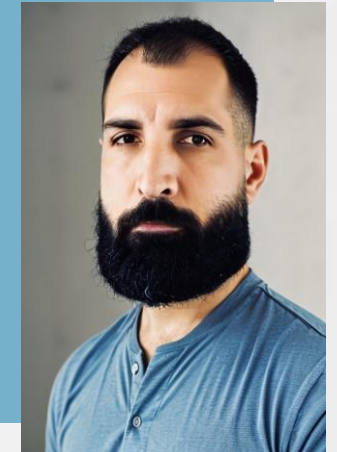
Erin Klett
Senior Director,
Research Innovations
Verité



Roopashree S.
India Operations Director
Sumerra Services India Private
Limited



Kritika Chauhan
Assistant Manager
Shahi Exports Ltd.




Michael Baldino-Kelly
Director of Program
Development
Responsible Sourcing
Network (RSN)



The Good



The Good: Integrating Lessons & Navigating New Regulations



The Good: Assessments Used to Fill Gaps and Improve



The Good: Traceability, Transparency, and Assurance



The Bad



The Bad: Auditors Inexperience with Sourcing & Due Diligence



The Bad: Lack of Data



The Bad: The Limits of Traceability



The Ugly



The Ugly: Lack of Preparation & Aligning Expectations



The Bad: Understanding International and Regional Risk



The Ugly: Traceability Over-reliance and Burden

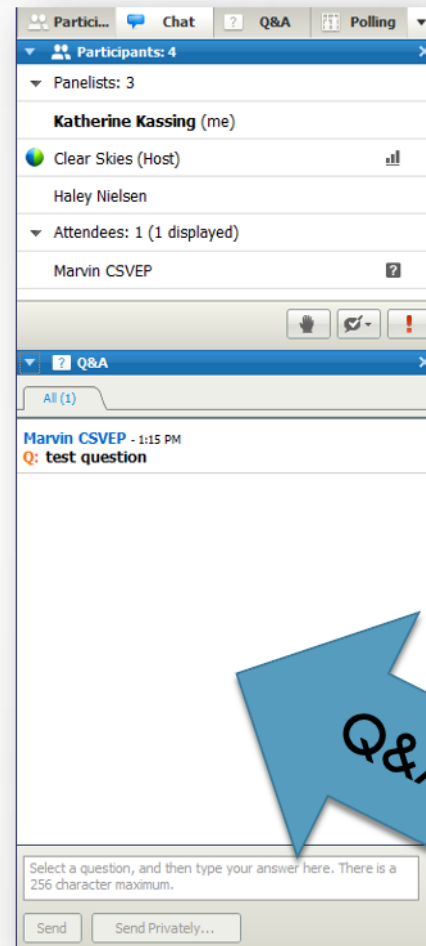


The Way Forward

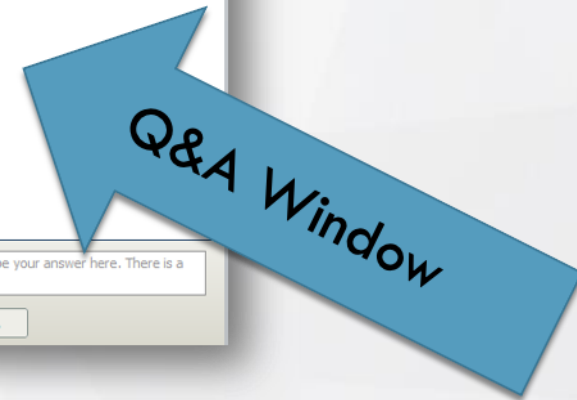
The slide features a light gray background with a faint, low-poly geometric pattern. At the top, there are two horizontal bars: a blue one on the left and an orange one on the right. At the bottom, there are two horizontal bars: an orange one on the left and a blue one on the right. The central text is in a bold, dark brown font.

**How do we get to
where we want to be?**

Q&A



The screenshot displays a software interface with a top navigation bar containing 'Partici...', 'Chat', 'Q&A', and 'Polling'. Below this, a 'Participants: 4' section is expanded to show 'Panelists: 3' and 'Attendees: 1 (1 displayed)'. The panelists listed are Katherine Kassing (me), Clear Skies (Host), and Haley Nielsen. The attendee listed is Marvin CSVEP. A 'Q&A' window is open, showing a question from Marvin CSVEP at 1:15 PM: 'Q: test question'. At the bottom of the Q&A window, there is a text input field with the instruction 'Select a question, and then type your answer here. There is a 256 character maximum.' and two buttons: 'Send' and 'Send Privately...'.





Thank you!

Contact:

Patricia Jurewicz

Founder & CEO

Responsible Sourcing
Network (RSN) and
Yarn Ethically & Sustainably
Sourced (YESS)

patricia@sourcingnetwork.org

Erin Klett

**Senior Director,
Research Innovations**
Verité

eklett@verite.org

Roopashree S.

India Operations Manager
Sumerra Services

rshree@sumerra.com

Kritika Chauhan

Assistant Manager
Shahi Exports Ltd.

kritika.chauhan@shahi.co.in

Michael Baldino-Kelly

**Director of Program
Development**
Responsible Sourcing
Network (RSN)

michael@sourcingnetwork.org